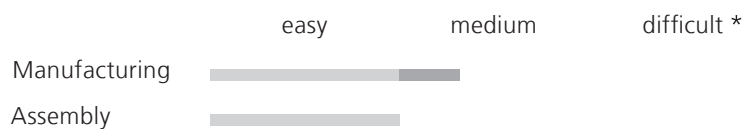


# SLIDING DOOR SYSTEMS: ASSEMBLY INSTRUCTIONS

## DOOR WITH WOODEN FRAME C-42

Version 4\_May 2009



\*Base for the degree of difficulty is a standard sliding door without slant.  
This is to be classified as ,easy' in respect of production and installation.

**raumplus**

# INDEX\_

**General information / tools**\_page 3

**Technical terms**\_page 4

**Detail drawings**\_page 5-11

**Preparation / Assembly**\_pages 12

# \_GENERAL INFORMATION / TOOLS

## ASSEMBLY INSTRUCTIONS SLIDING DOOR SYSTEM:

### GENERAL INFORMATION

**raumplus** sliding door systems offer a wide range of variation possibilities. There are systems with and without bottom tracks, a great number of panel variations, doors for sloped ceilings and corner solutions or doors for special application purposes (lockable, application as room divider etc.). For installation of the sliding doors, assembled according to these assembly instructions, please use the installation instructions.

These directions were created by people for people. We have made an effort to develop the instructions and pictures so that they are logical and easy to understand. If you should nevertheless find something to be unclear, please let us know so that we may revise that section. **Technical details are subject to change.**

First of all, get a general idea about what you would like to assemble.

#### **Are you installing ready-made sliding doors?**

These instructions are the instructions for a solid door / frameless door. Please read the installation instructions for sliding doors.

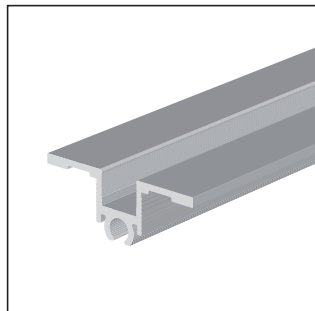
Please check to see if you received all items by checking the delivery sheet. Please also look out for possible transport damages. In case of any damage please contact your supplier immediately. The single components are numbered on the detail drawing as well as on the delivery sheet – please check.

**REMARKS:** Before starting please read our measurement instructions in order to find the correct measures. Handles do not belong to the ordinary delivery.

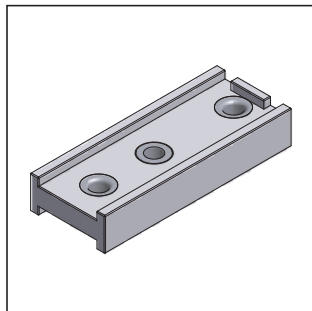
### TOOLS:

Allen key 4,5 mm; Battery screw; Circular saw; Edge gluing machine; Milling table machine; Press / clamp; Wood drill 10 mm; Metal drill 6,5 mm; Joint drill 10 mm

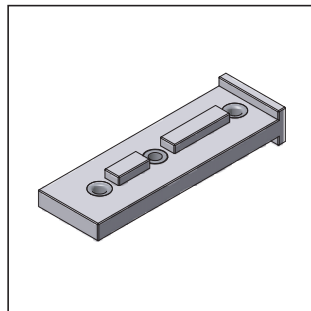
# TECHNICAL TERMS



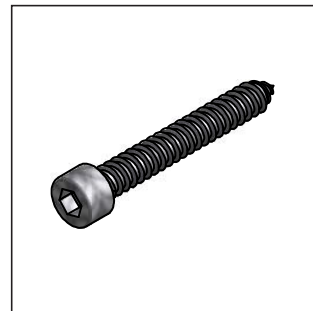
1\_



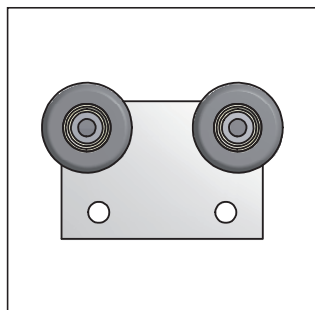
2\_



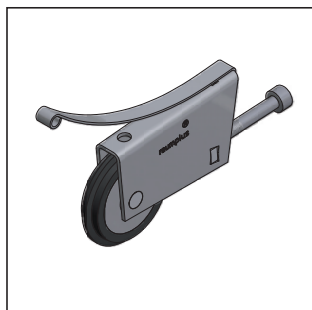
3\_



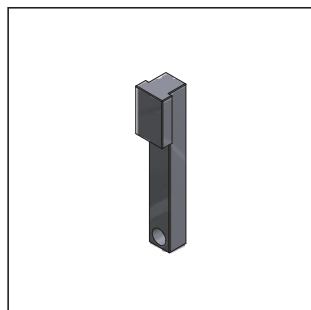
4\_



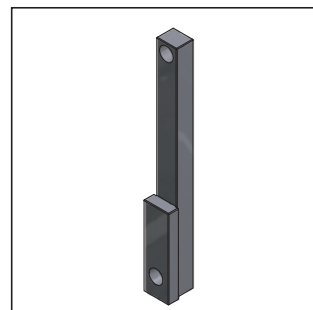
5\_



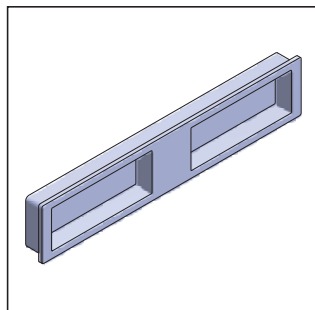
6\_



7\_



8\_



9\_

1\_C-42 profile (19.51.022)\_

2\_Drilling template for C-42 profile 10 mm (30.14.012)\_

3\_Drilling template for C-42 profile 6,5 mm (30.14.013)\_

4\_Frame screw (10.07.110)\_

5\_Top roller solid wooden door (10.01.019)\_directly at the filling fastened rollers.

6\_Bottom roller, screw 40 mm (10.51.030)\_are fixed in the lower profile.

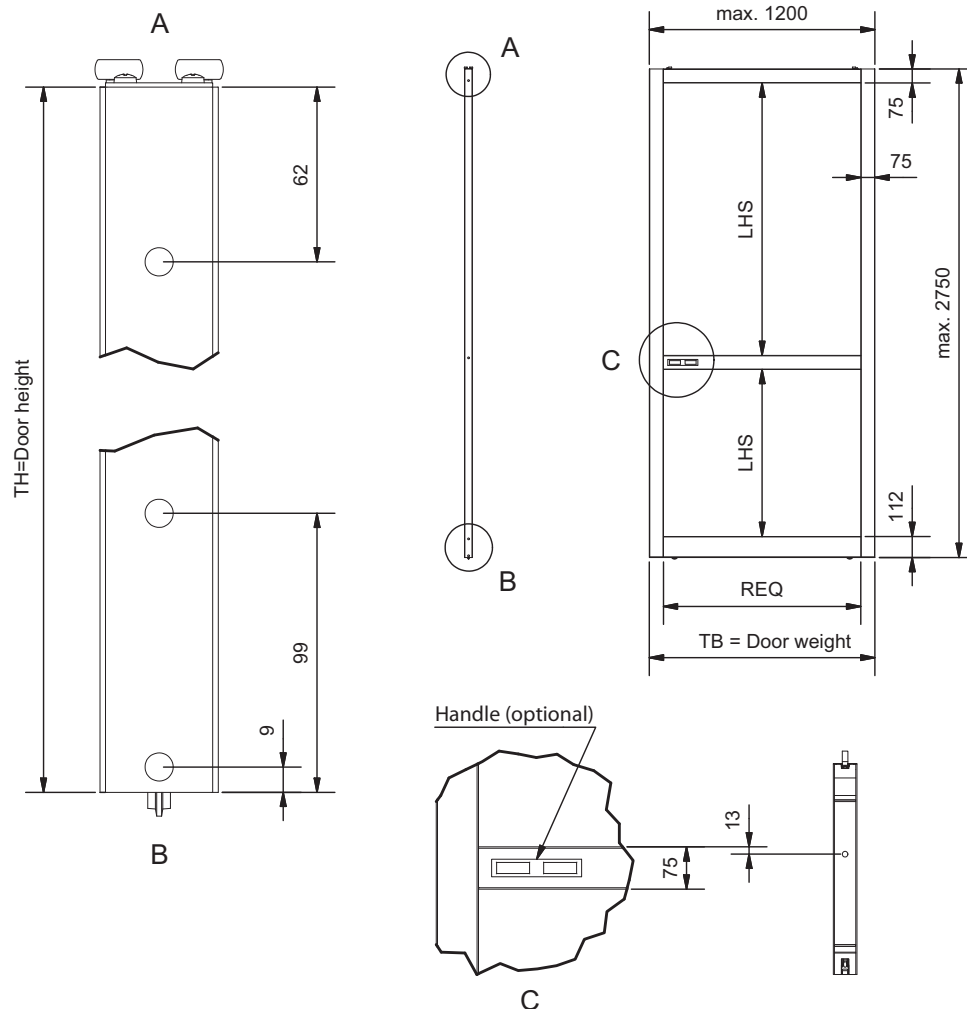
7\_C-42 Profile top connector (10.51.020)\_

8\_C-42 Profile bottom connector (10.51.010)\_

9\_C-42 Handle (10.51.040)\_

# DETAIL DRAWING

## TECHNICAL DATA



### General:

max. height: 2750 mm

max. width: 1200 mm

max. weight: 90 kg

Overlapping: 75 mm

Frame material = FPY 38 (testet)

Adhesive = Aqualine Alu of Collano (testet)

### Legend:

TH = Door height; TB = Door weight;

LH = Opening height;

REQ = Frame element across

LHS = Opening height dividing rail

### Cutting measure:

1. Door

TH = LH - 40mm (at bottom track surface)

REQ = TB - 150mm

2. Panel for door with dividing rail

2.1 with gasket

LHS + 14mm

REQ + 14mm

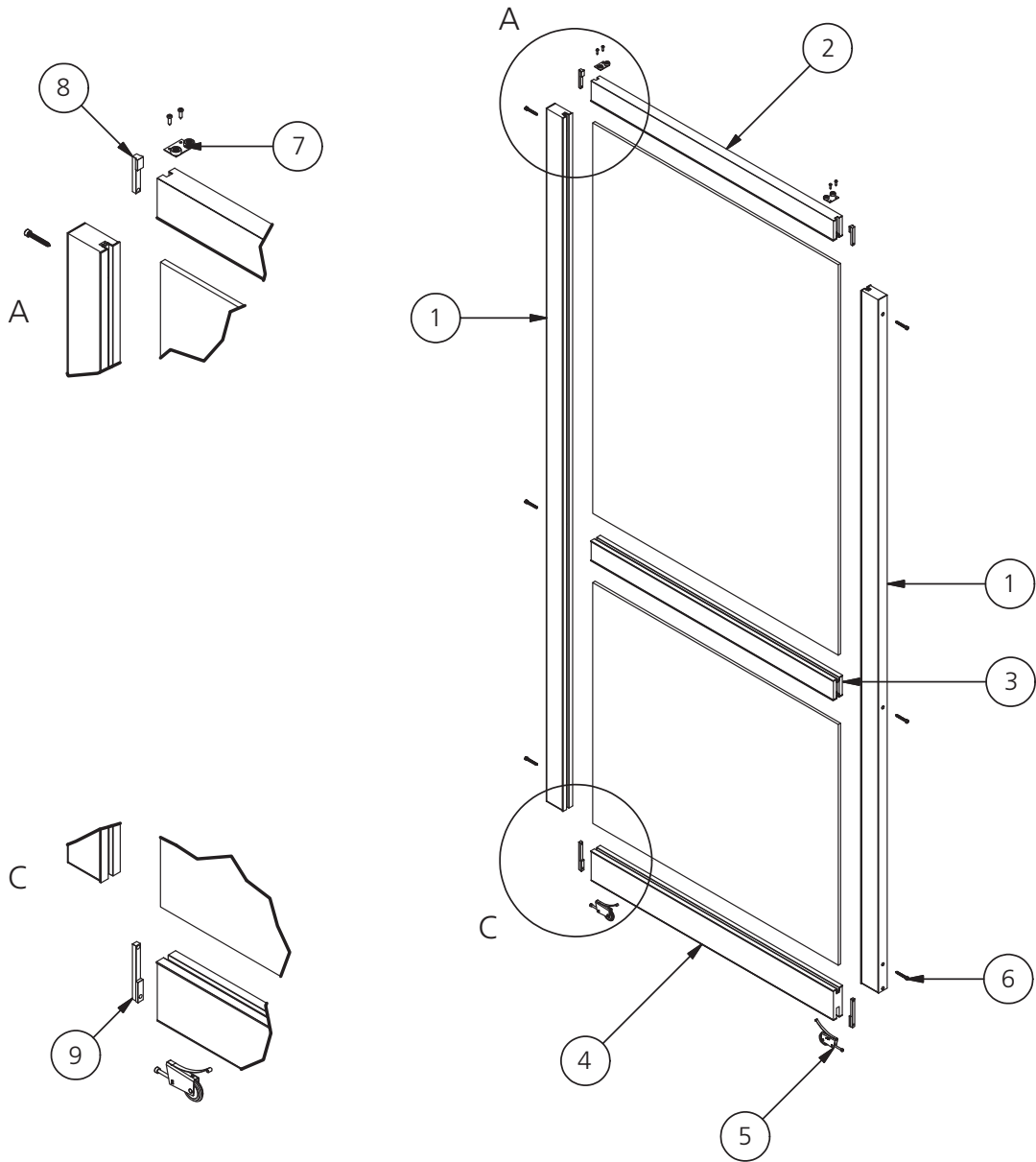
2.2 without gasket

LHS + 16mm

REQ + 16mm

# \_DETAIL DRAWING

## EXPLOSION DRAWING COMPLET

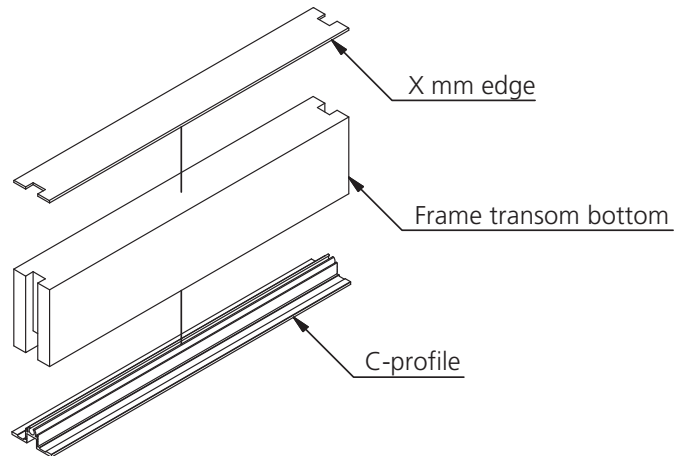
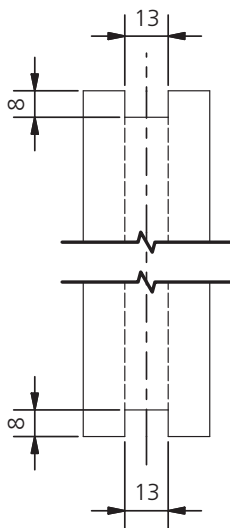
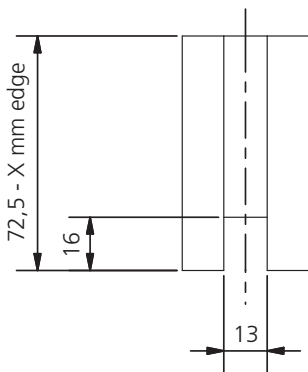
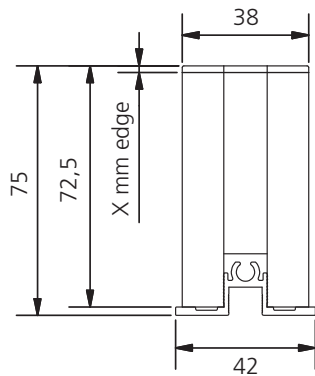


Item list

OBJECT	QUANTITY	COMPONENT NUMBER	DESCRIPTION
1	2	2008-0016-90-90-013	Frame element vertical
2	1	2008-0016-90-90-007	Frame element horizontal top
3	1	2008-0016-90-90-014	Dividing rail
4	1	2008-0016-90-90-008	Frame element horizontal bottom
5	2	10.51.030	Bottom roller + 40 mm screw
6	6	10.07.110	Frame screw 6,3 x 45mm
7	2	10.01.019	Top roller solid wooden door
8	2	10.51.020	C-profile connector top roller
9	2	10.51.010	C-profile connector bottom roller

# **\_ASSEMBLY**

## FRAME ELEMENT HORIZONTAL TOP



### **1\_Sawing of frame transom:**

- effective length
- greige width (72,5 mm - X mm edge).

### **2\_Apply edge.**

### **3\_Continuous groove of 13 x 16 mm to be center milled.**

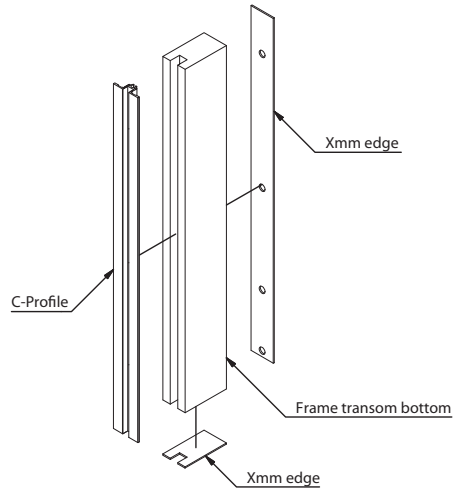
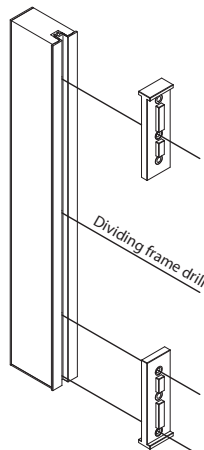
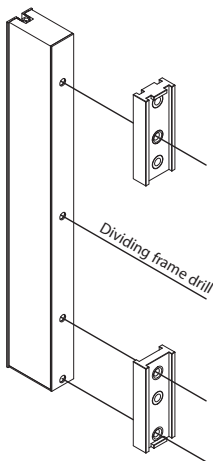
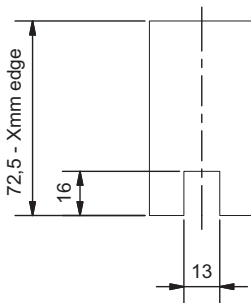
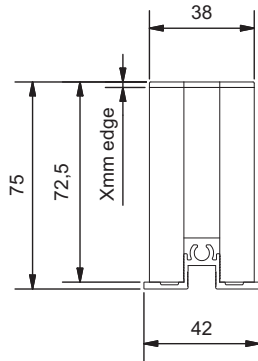
### **4\_On both ends mill one grove 13 x 8 x min. to be center milled.**

### **5\_Glue profile to frame transom.**

### **6. Then cut the profile to flush with transom.**

# \_ASSEMBLY

## FRAME ELEMENT VERTICAL



### 1\_Sawing of frame transom:

- effective length
- greige width (72,5 mm - x mm edge).

### 2\_Apply edge at the front side.

### 3\_Apply edge on the face.

### 4\_A continuous groove of 13 x 16 mm to be center milled.

### 5\_Glue profile to frame transom.

### 6\_Then cut the profile to flush with transom.

### 7\_Drill frame element with 10 mm drill in the chipboard, once on top twice on bottom, using a drilling template.

Position of the dividing rail drill = top edge dividing rail - 13mm

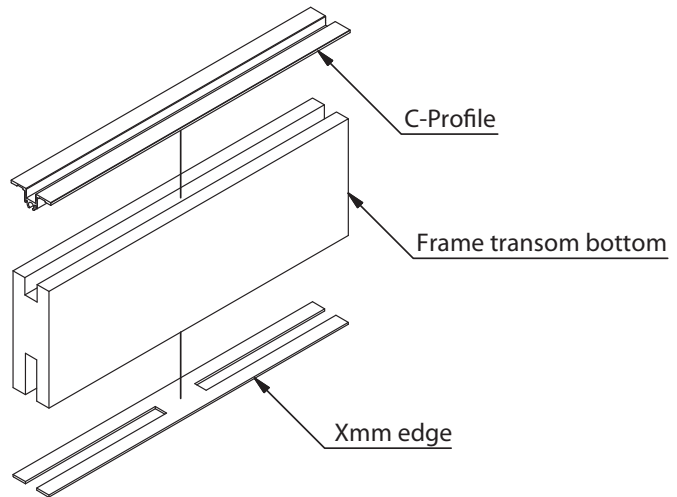
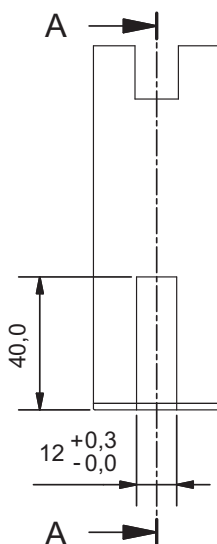
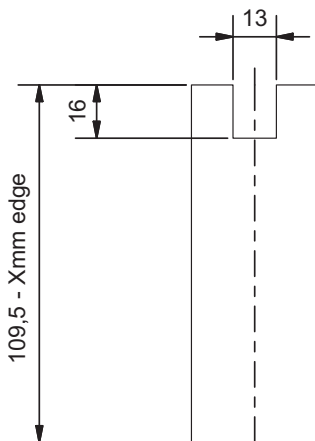
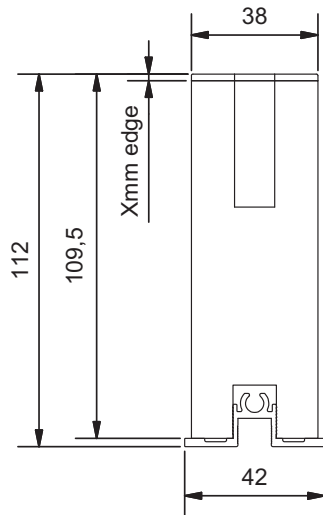
### 8\_Drill frame element with 6,5 mm drill in the chipboard, once on top twice on bottom, using a drilling template.

Position of the dividing rail drill = top edge dividing rail - 13mm



# \_ASSEMBLY

## FRAME ELEMENT HORIZONTAL BOTTOM



### 1\_Sawing of frame transom:

- effective length
- greige width (109,5 mm - X mm edge).

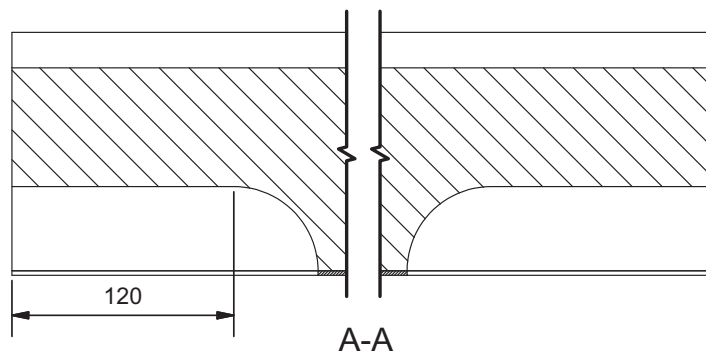
### 2\_Apply edge.

### 3\_Continuous groove of 13 x 14,5 mm to be center milled.

### 4\_On both ends mill one grove 12 x 40 x min. 120 mm.

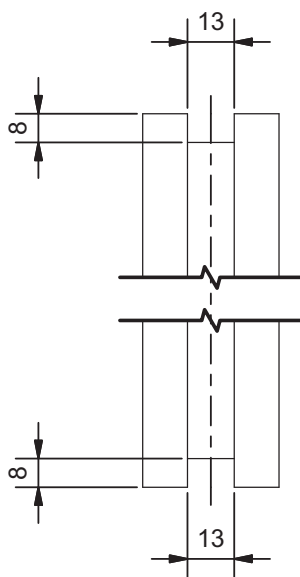
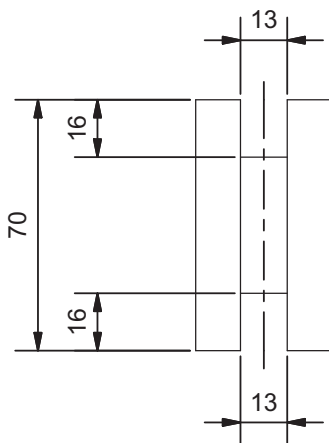
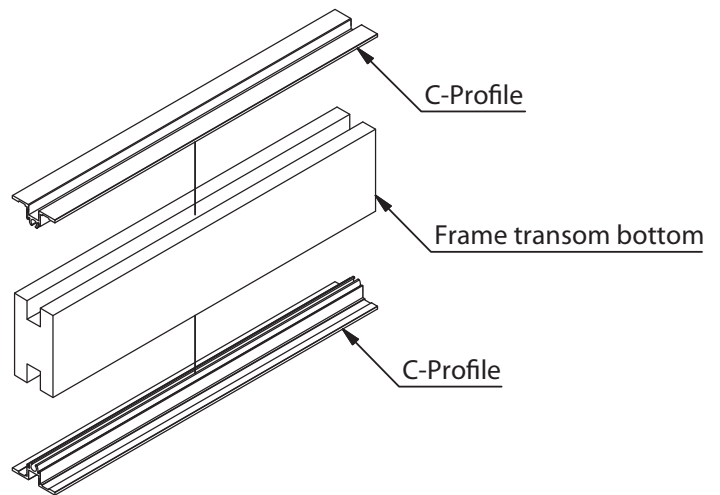
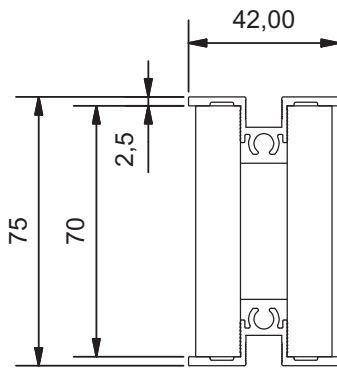
### 5\_Glue profile to frame transom.

### 6. Then cut the profile to flush with transom.



# **\_ASSEMBLY**

## DIVIDING RAIL



### 1\_ Sawing of frame transom:

- effective length
- groove width (70mm).

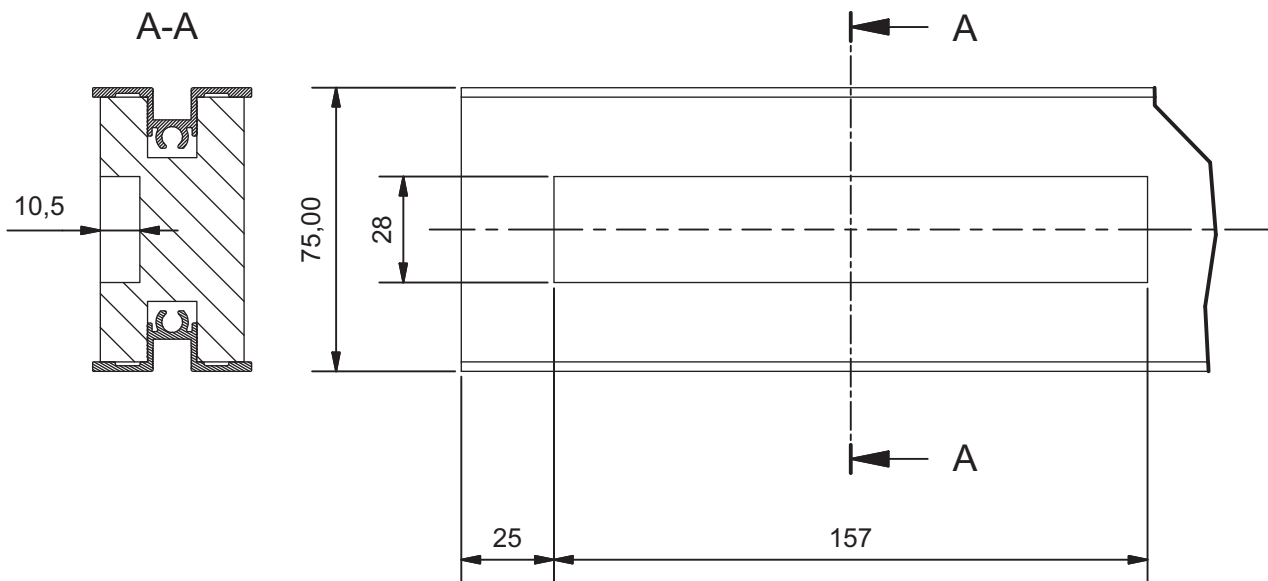
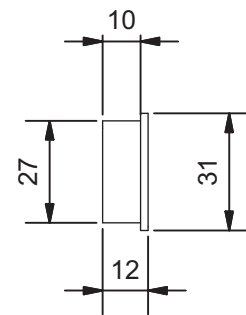
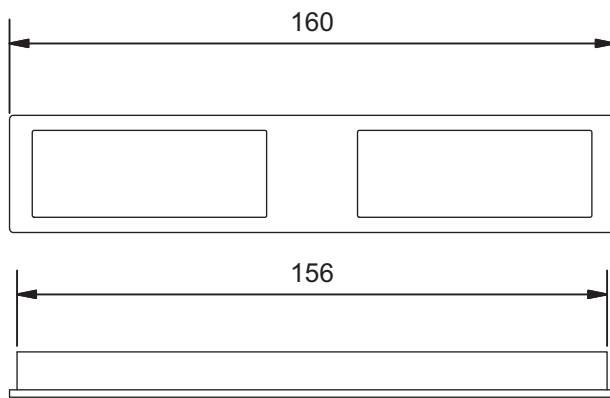
### 2\_ Continuous groove of 13 x 16mm to be center milled.

### 3\_ Glue profile to frame transom.

### 4\_ Then cut the profile to flush with transom.

# \_ASSEMBLY

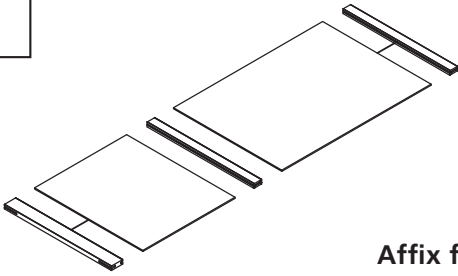
MILLING HANDLE C-42 10.51.040



# \_ASSEMBLY

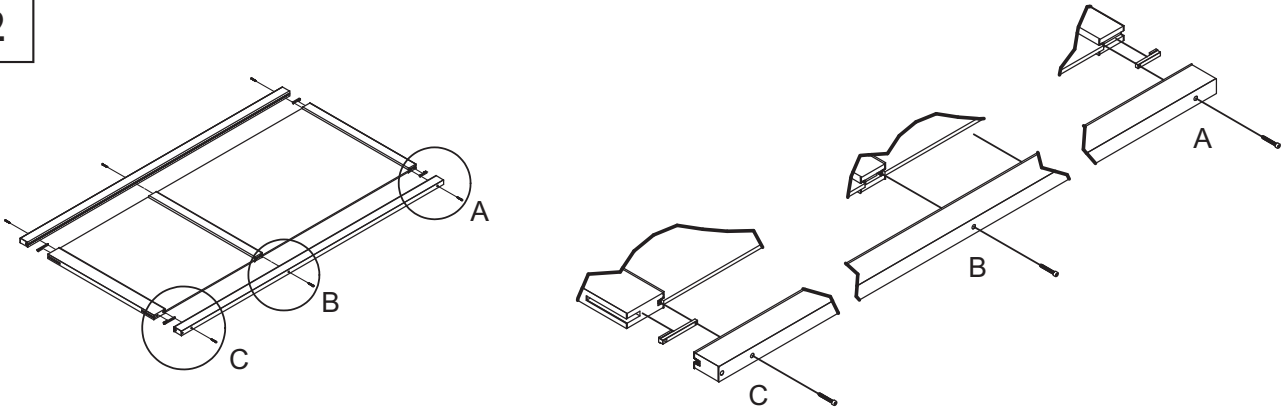
## DOOR WITH WOODEN FRAME C-42

1



Affix frame element to panel tightly in the middle with rubber mallet.

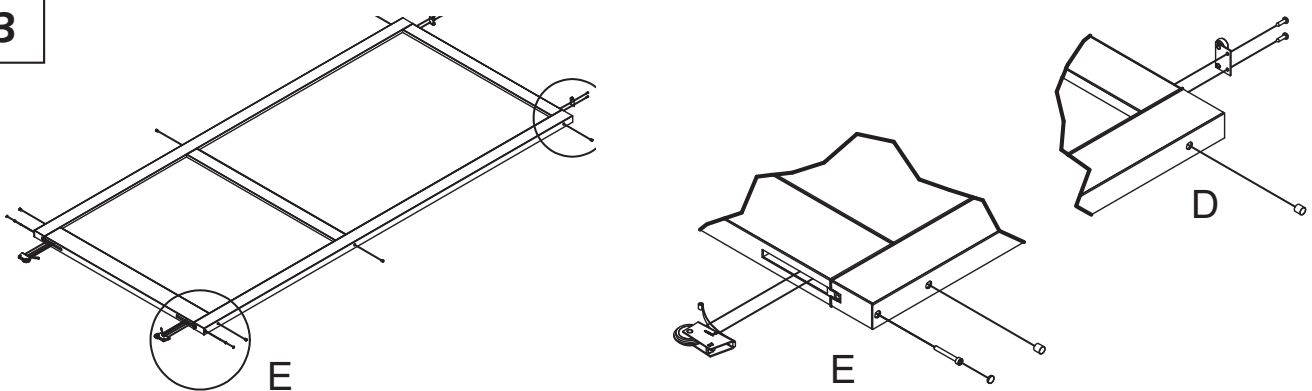
2



Affix vertical frame elements with rubber mallet so that they are even with horizontal frame elements top and bottom.

Put the connector in the panel channel and fasten with frame screw (detail A + B).

3



Screw in the top roller 90 mm from edge to the top frame element (detail C). Put the bottom roller in the bottom frame element and screw through the pre - drilled hole until roller is fixed (detail D). Beat the blind plug to level into the frame (cut a 10 mm blind plug with the help of a tenon cutter).